

# ***BUILDING TRUST. BUILDING FUTURE.***

Project Support and Contracting Company

Your satisfaction is our goal,  
Your vision is our business

**MODERN  
PLATFORM  
CONTRACTING**  
COMMITTED TO EXCELLENCE



رؤية  
**2030**  
المملكة العربية السعودية  
KINGDOM OF SAUDI ARABIA

7607-Al Kaabi, Al Ruwais District,  
P.O. Box 3706, 23215, Jeddah,  
Kingdom of Saudi Arabia  
[www.mpc-solution.com](http://www.mpc-solution.com)



# ***YOUR DREAM OUR TEAM***

## ABOUT US

MPC Contracting Est. are Saudi Arabia based, a fully integrated project and industrial support engineering company. We proudly introduce us as one of the prominent contactors of Power, Desalination, Oil & Gas Sector.

MPC Contracting Est. is equipped with all the necessary resources in terms of manpower, equipment including quality and safety implements. From a successful start, MPC rapidly included additional diversified service offering to meet the growing requirement for the core sector industries as Oil & Gas, Petrochemical, Power and other related sectors including infrastructure field.



**RCC  
GROUP**  
CONSTRUCTION INC



## CORE VALUES



Safety



Ethics



Quality



Diversity



# Certificate

This is to Certify that

**MODERN PLATFORM CONTRACTING**

7607, Al Kaabi, P.O. Box 3706, Al Ruwais District, 23215 Jeddah,  
Kingdom of Saudi Arabia

has been found in Compliance with requirements of

**Quality Management System**

**ISO 9001:2015**

for the following scope:

Civil Works Services, Pipeline Repair and Installation, Maintenance and Shutdown Jobs, Fencing, Audio Tactile, Road Marking, and Asphalt Work, Electro Mechanical Works, Lifting Solution & Supply IT/Energy Solution, Supply of Equipment & Industrial Material, Supply, Scaffolding & Formworks & Division, Facility Management Services.

Certificate No. : QCC/0115/1024

Issue Date : 23-October-2024

1st Surveillance Due : 22-September-2025

2nd Surveillance Due : 22-September-2026

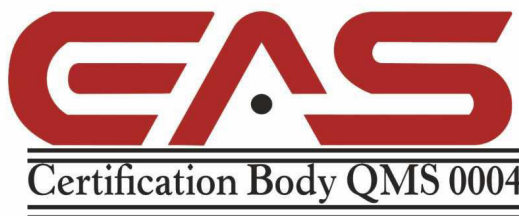
Expiry Date : 22-October-2027

To check this certificate status visit:  
"<https://qccertification.com/Client.aspx>"

Authorised Signature

**Quality Control Certification**

2nd Floor, Aman Market,  
Narela Mandi, Delhi - 110 040, India  
Website: <https://qccertification.com>



**EAS is member of International Accreditation Forum (IAF)**

"Quality Control Certification (QCC)" accredited by "Ethiopian Accredited Service (EAS)".  
This certificate remains the property of "QCC" to whom it must be returned on request.

## MODERN PLATFORM CONTRACTING

## مؤسسة منصات الحديثة للمقاولات

### Traffic Safety Department

#### ➤ Company policies:

##### Quality Policy:

- The company holds the international certificate in quality management, ISO 9001.
- The company is keen to provide high-quality services in accordance with international standard specifications for the requirements of quality management systems. The organization aims for continuous development to be the first choice for its customers by meeting all their needs and providing its services with mastery, excellence and on time in accordance with the regulations.
- Client trust and satisfaction are the first axis in the organization's policy, as work is done to preserve, strengthen and improve it by fulfilling its obligations and pledges in a way that exceeds their expectations, taking their suggestions into account and reviewing policies and procedures to improve the quality of service provided.
- The company is also keen to support, train, develop and encourage all its staff and maintain them to achieve a high level of efficiency and advance them to achieve their personal goals and achieve the company's goals.
- MPC Company always seeks to compete with the market by developing and improving the efficiency of the quality policy and providing services according to its specifications.
- The company periodically reviews quality policy, procedures and objectives to improve the quality of service.

## **Occupational safety and health policy:**

- The company holds the international certificate in occupational safety and health management, ISO 45001.
- The company's policy adopts the slogan of human health, operational safety and a clean environment for all people, considering their necessities and not a luxury, which is the main driver for the continuation of business and daily activities.
- The continued success of MPC depends on the ability to proactively manage the health, safety and environmental aspects of its business and set goals for improvement and development.
- MPC works to build a culture that aims to apply high levels of safety and security to all workplaces. It is also obligated to stop work that exposes the health and safety of people to danger. The company's policy also requires all members of the company's management and work crew of all categories to remember that safety is a moral responsibility and legal.
- The company also aims to keep this commitment at the forefront of the concerns of its management and staff, as is the case with the contractors working with it and everyone who may be affected by its activities. From this standpoint, the company is committed to its commitment to observing all necessary standards and standards in force locally and internationally, and since it believes in the possibility of preventing all human and material losses, the administration realizes that all losses can be avoided.

## **The purpose of these policies is to improve the level of the company's commitments in the following aspects:**

- Focusing on the staff to achieve excellence in safety, health, environmental preservation, quality of work and productivity.
- Providing the necessary training for the work crew to avoid risks to health and safety.
- Working to improve the culture of safety and health to preserve the environment.
- Every individual in the company and the company's contractor obtains (a booklet) on safety standards and training, if necessary, to be able to

- assume his responsibilities towards adhering to the policy and regulations in the Kingdom related to health, safety and the environment
- Protecting the environment from pollution resulting from the company's various activities.
- Ensure that the company's staff and contractors are aware of the risks and safe work practices when performing their duties.
- Preparing reports on hazard locations when performing work in order to contribute to the safety of society.
- Setting goals and measures and publishing a report on the overall performance evaluation of health, safety and environment.
- MPC is committed to proactive management of health, safety and the environment in all aspects related to health and safety and has an integrated management and training system.

**This policy is for the company's upper management system and is reviewed regularly to determine the suitability and effectiveness of implementation and to strive to develop it and continuously train its employees.**

### **Training and development policy:**

- The company's senior management believes in the continuous development of skills and capabilities on the work or personal levels. The management also realizes the importance of the addition resulting from development, organizing rotations and training programs, and providing advice and assistance to its employees to achieve the company's goals.
- The Human Resources Department integrates with the organization's departments periodically by identifying and evaluating the training and development needs of the company's employees and making training plans in coordination with administrative competencies and accredited bodies to provide the necessary lectures, courses, and training programs in accordance with the general objectives.

## The company's training policy aims to do the following:

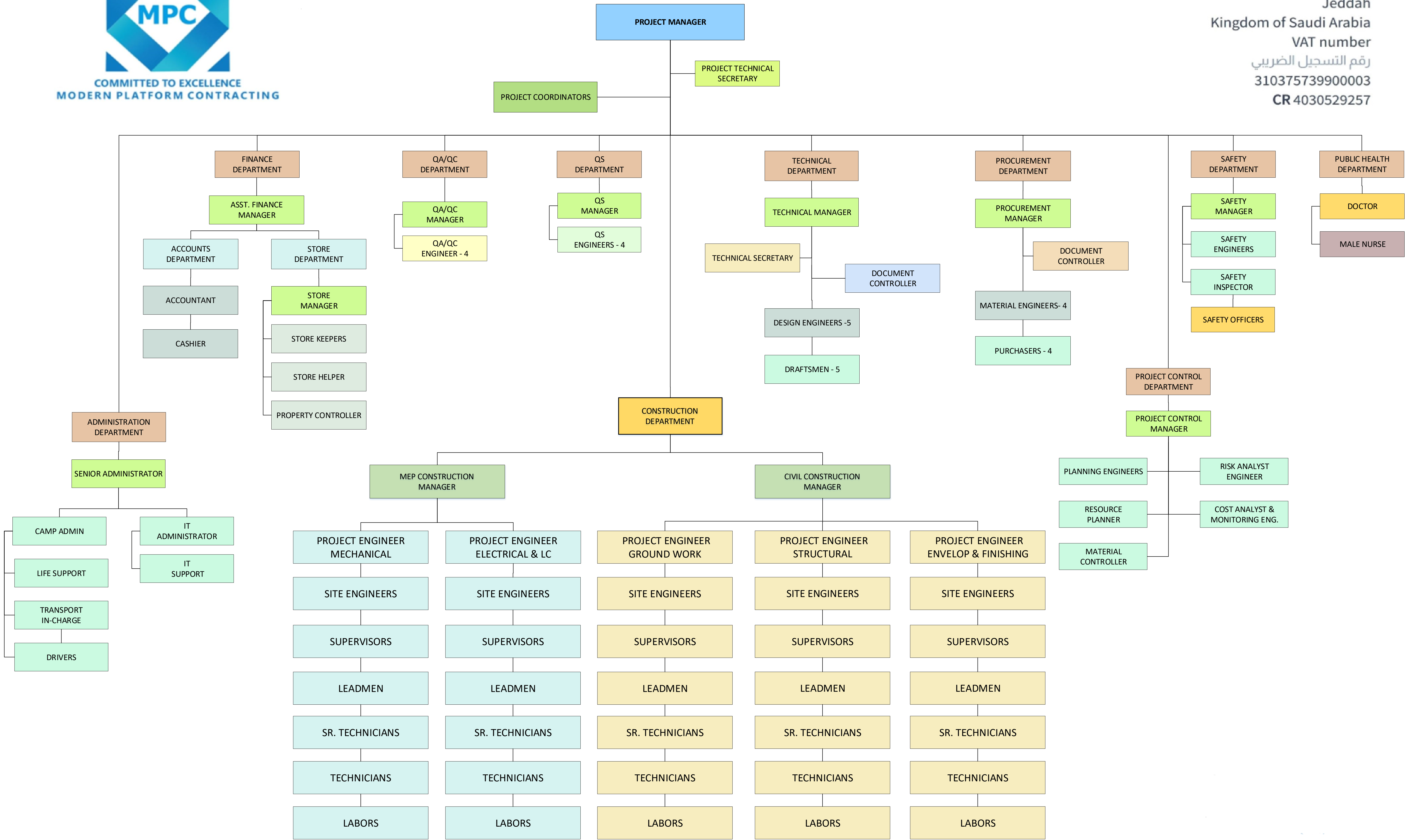
- Identify training needs.
- Qualifying its new employees, introducing them to the organization's systems, and helping them adapt to the company's working conditions.
- Showing the strengths and weaknesses of its employees to work on developing and improving their performance and abilities and achieving their personal professional goals and ambitions.
- Continuously developing the effectiveness of its employees and opening new horizons for them to participate and constructive practical thinking.
- Continuous communication with its employees about the goals, plans and directives of the company's activity





# PROJECT ORGANIZATION CHART

مؤسسة المنمة الحديثة للمقاولات-MPC  
7607-Al Kaabi, Al Ruwais District. P.O.BOX 3706, 23215  
Jeddah  
Kingdom of Saudi Arabia  
VAT number  
رقم التسجيل الضريبي  
310375739900003  
CR 4030529257





## OUR SERVICES

- Civil Works
- Electro Mechanical Works
- Lifting Solution & Supply
- Supply & IT / Energy Solutions
- Equipment & Industrial Material Supply
- Supply, Scaffolding & Formworks Division
- Facility Management
- Manpower Supply



# CIVIL WORKS

Construct, Operate, Maintain & Manage all types of Civil Work Activities

## Excavation, Backfilling & Soil Testing



- Surveying/Marking
- Compaction after reaching depth
- Watering
- Field Density Test in each layer
- Excavation
- Compaction
- Grading/Levelling
- Layer by layer backfilling

## Land Development (Site Preparation)



- Surveying/Marking
- Watering
- Shifting of sand (if required)
- Supply of required material
- Base course, select fill, marl
- Compaction & Watering
- Grading/Levelling

## Dewatering



- Wellpoint method of dewatering
- Deep wellpoint methods
- Eductor wells
- Open Sump Pumping

## Road Works (Asphalt & Reinforced)

### ASPHALT ROAD

- Applying of Prime Coat
- Applying of Tack (Bond Coat)
- 1st layer of Asphalt (Blinder Course)
- 2nd layer of Asphalt (Wearing Course)

- Surveying/Marking
- Spreading of base course
- Spreading of sub base
- Preparation of sub grade

### REINFORCED CONCRETE ROAD

- Laying polythene sheet
- Required reinforcement
- Frame works
- Pouring of concrete



# CIVIL WORKS

Construct, Operate, Maintain & Manage all types of Civil Work Activities

## Interior Work & Finishing



- Programming client design
- Design development
- Construction & Document Administration
- Installing
- Smagging
- Project Completion

## Temporary Facilities



- Installation of Porta Cabins (Office, Camps)
- Networking & Cableing
- Electric & Lighting
- Sanitary Systems
- Drainage System for camps and offices

## Fence & Parking Shades



- Installation of all kinds of fence
- Supply of fencing materials
- Supply of gates
- Installation of parking shades
- Supply of metal traffic barriers

## Sub Structure & Super Structure



- Shallow Foundations/Spread Footings
- Isolated Footings
- Strip Footing and Raft Foundations
- Masonry Units (Walls & Columns)
- Floor Structures
- Roof Structures
- Doors, Windows & other openings
- Verticle transporation structures (Stairs, Lifts, Ramp etc.)

## Building Finishes



- Polastering & Pointing
- Painting
- Varnishing & Polishing
- White washing
- Distempering
- Color washing or coloring

# **ELECTRO MECHANICAL WORKS**

General Contracting, Maintenance, Installations & High Quality Electro Mechanical Supplies



**CW Line Stop  
Loge send blasting**



**CW Line Stop  
Loge Painting**



**CW Line Stop  
Loge Repairing**



**Cooling Water Debris  
Filter Cleaning & Repair**



**New C/W Debris  
Filter Installation**



**Civil Foundation of  
D/F**



**Boiler Tube Edge  
Preparation**



**Boiler Corner Tube  
Shifting for Replacement**



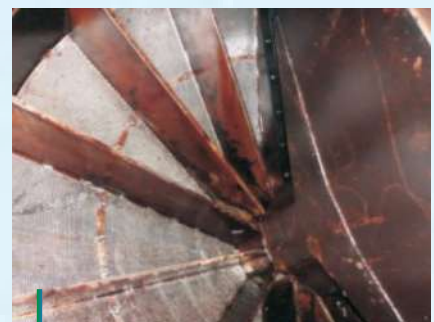
**Boiler Insulation  
Repairing**



**Butterfly Valve  
Replacement**



**Butterfly Valve  
Installation**



**Main Cooling Water  
Debris Filter Cleaning**



# ***ELECTRO MECHANICAL WORKS***

General Contracting, Maintenance, Installations & High Quality Electro Mechanical Supplies



**Old Piping  
Removal**



**Main Cooling Water  
Debris Filter Cleaning**



**New Piping Installation  
with Fitting**



**Boiler Super Heater  
Installation**



**Boiler Tubes Cutting  
& Edge Preparation**



**Boiler  
Work**



**High Pressure  
Piping Work**



**Steel  
Structure**



**Pipe Fabrication in  
Workshop**



**New Gasket  
Installation**



**Gasduct &  
Insulation Work**



**Steel Structure  
Fabrication & Erection**

# EQUIPMENT & INDUSTRIAL MATERIAL SUPPLY

Offers a complete range of construction equipment & construction services, as well as wholesale & retail in equipment motor vehicles, trucks & cars.

## Energy Solutions —



- Generators (Diesel, bi-fuel & gas) producing multi mega watt capacity
- Step up/Step Down Transformers
- Oil Cooled & Air Free Compressors
- Diesel Welding Machines
- Specialized Equipment rentals for short/long term site infrastructure
- Plant design & Application Engineering
- Temporary Cooling Solutions
- Transport, Installation & Commissioning
- Operation & Maintenance including fuel management
- 24/7 Breakdown & Sales Support
- Highly skilled manpower services

## Heavy Lifting —



- All Terrain Cranes
- Rough Terrain Cranes
- Lattice Boom Crawler Cranes
- Professional consultancy with innovative engineering techniques
- Cranes & other specialized equipment rentals with well trained operators
- Turnkey solutions including project management, technical assessments & competent dedicated staff
- Alternative lifting techniques-jacking & skidding
- Proof load testing & load weighing
- 24/7 fully equipped mobile workshops and maintenance

## Heavy Transport —



- Heavy duty low bed trailers
- Flatbed Trailers
- Prime Movers
- Hydraulic Bolster Trailers
- Trailers & other specialized equipment with rentals and well trained operators
- Professional consultancy with innovative engineering solutions
- Turnkey solution including project management, route planning, technical evaluation and competent dedicated staff
- 24/7 fully equipped mobile workshops & maintenance
- Self propelled modular transporters (SPMTs)
- Modular multi axle hydraulic trailers
- Hydraulic drop check trailers
- Hydraulic crawler decks

## Solar tower Lights —



- Solar renewable energy
- 3x360W solar panel, strong output
- High illumination, Total 60,000 lumens
- 900 AH Battery for 21 hours continuous running
- Applications: Special events, constructions, Utilities, Military, Airport and Sea Port

## Battery Tower Lights



- Upto 27000 Lumen of AC/DC task or area lighting
- TRUEVIEW High Output LED Technology
- On AC mode 27,000/DC mode 20,000 Lumen max
- Four adjustable light heads for task area lighting
- Most versatile 3m high tower light in-out & outdoor
- Low weight of 48 kg and low center of gravity for easy transportation
- Easy setup with motorized tower expansion upto 3.1 m height
- One-Key customization, tracking, security and management
- Withstands the storm, designed for outdoor use
- IP 55 rated dust & water protection.

## Fuel Tanks —



- Small and bulk diesel storage tanks
- A wide range from 500 IG upto 20,000 IG fuel storage capacity
- Single skin & bunded certified tanks
- Fleet size 250+

## Diesel Tower Lights



- Well-suited for a variety of uses from construction site lighting to illuminating temporary parking spaces to music events.
- Adjustable vertical mast extends 7-9 meters and can rotate 360 degree for optimum lighting flexibility
- Compact design and foldable tongue



## CCTV Installation

We design, install and maintain CCTV according to client's need and purpose.

- Maintaining perimeter security in medium, to high secure areas
- Observing behaviour of dangerous patients in medical facilities
- Traffic monitoring
- Building of ground security
- Observing of visual record of activities in situations where IT is necessary to maintaining proper security



## Access Control

All businesses, whether small, medium or large have assets that need to be protected from theft. It is common in buildings that are secured by locks and keys for doors to be left unlocked all day. This opens up possibility of opportunity to theft and malicious damage.

Electronic access control provides the most efficient and convenient way of securing your building and assets. Installing an access control system means that you will never have to change a lock again. Tokens are issued to allow access through the controlled doors and are easily barred from the systems if they are lost, stolen or just not returned by someone who leaves your company. Barred tokens will not allow access through the controlled doors.

This token may come in the form of PIN, fingerprint, retin scan or other biometric measures, card or key.



## Alarm Installation

We install alarm systems in residential, commercial and industrial properties for protection against burglars or property damage as well as personal protection against intruders. MPC can also combine systems to provide both fire and intrusion protection.



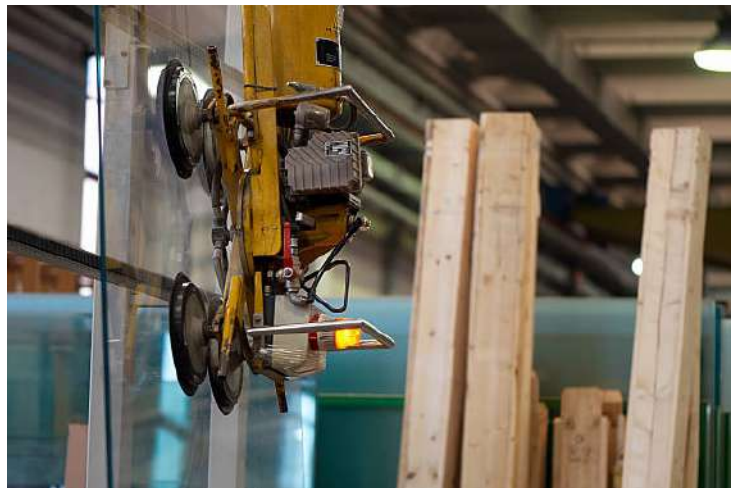
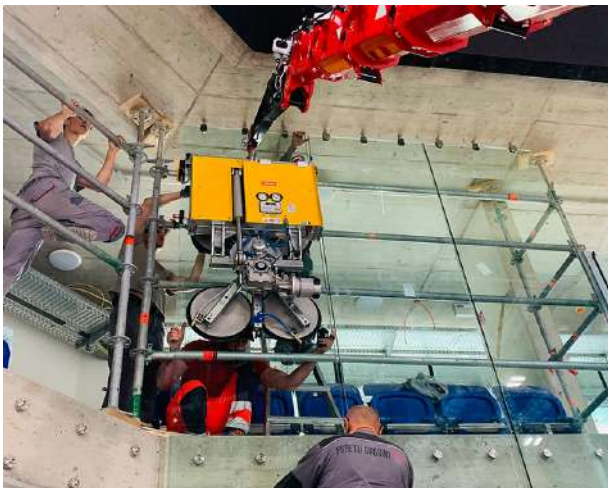
## UPS

We supply and install uninterruptible power supply to allow clients systems especially computers to run for at least a short time when primary source power is lost. This gives the users time to safely shut down the system and also save important documents. In addition it also provides protection from power surges.

# VACUM GLASS LIFTER



Weight: 400kg/600kg/800kg/1000kg/1200kg





# WASHING MACHINE

Electric Floor Scrubber especially suitable to large commercial industrial zone cleaning requirements. According to people's habits and improve the design of the driving style washing cars, new compact design flexible and easy to operate faster and more efficiently.

- Large water tank capacity (140L)
- High power rear drive axle motor to increase the climbing capacity
- Stop suction delay to stop dripping from leaking
- Squeegee automatic lifting when stopping or reversing to ensure longer life
- The whole short-circuit intelligent protection and motor negative overload
- Squeegee automatically reset to achieve the most perfect water effects
- Onboard charger design to ensure charging operation anywhere at anytime
- Brush compressing function to ensure thorough cleaning

## Feature

The streamlines ergonomic design provides perfect operation effect. Super large LCD touch working status of the machine at a glance. Battery capacity of 145AH, can work continuously for more than 4-5 hours. Stainless steel anti-corrosion and hard to damage. Adjustable brush power system easy operation. Machine can be overturned for easy repair and maintenance.

**Suitable for:** Hotels | Supermarkets | Shopping Malls | Offices | Airports | Railway Stations | Factories | Workshops



# ***VERTICAL CARGO LIFT***



# ***STATIONARY SCISSOR LIFT TABLE***



# ***MOBILE SCISSOR LIFT***



# ***SELF PROPELLED SCISSOR LIFT***



# ***DUAL MAST ALUMINIUM AERIAL WORK PLATFORM***



## ***HIGH SINGLE MAST MAN LIFT***



# ***BOOM LIFT***



# ***TOWABLE BOOM LIFT***



# **CRADLES** **(SUSPENDED PLATFORM)**



# **CRADLES HANGING SYSTEM**

## ***(Types of Installation)***

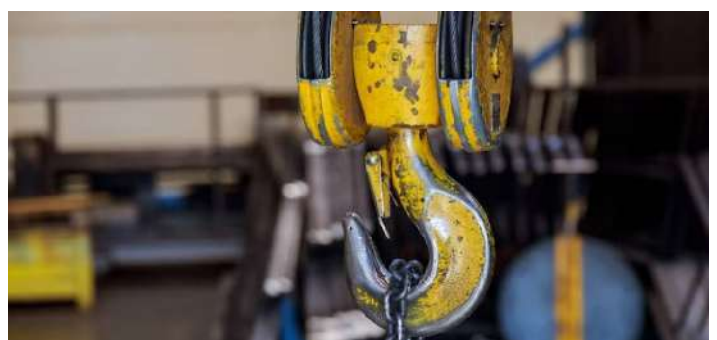
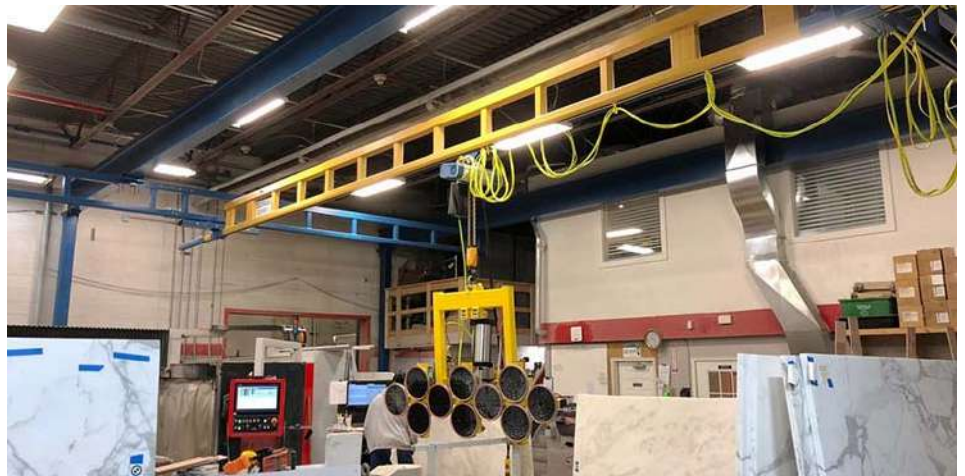


With the experience and fabricating force our company has, made us capable to provide the common hanging systems in addition to any special requirements.

- Parapet clamps
- Standard L-Brackets and reversed L-Brackets
- Standard and special slab - Beams
- Standard (Fixed & Mobile) Hanging device
- Special hanging device
- Monorails (Single & Double)
- Any other special applications required for any site



# LIFTING SOLUTIONS



# **INDUSTRIAL SCAFFOLDING SERVICES**

MPC is the leading supplier of scaffolding & specialist access services with key skills & resources that cater to specific access needs of the highly demanding Petrochemical and industrial markets.



# ***A TOTAL CONCEPT OF SERVICE***

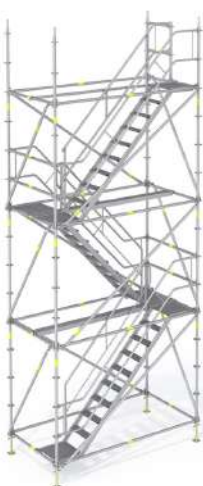
Our experienced staff in all aspects are fully capable to price, erect, dismantle traditional and special scaffolds using Cuplok System scaffolding and tube & fitting to provide access solutions for external open areas, internal confined areas, suspended platforms and mobile & static towers. We provide our customers with professional, economic and reliable services combining high quality products and experienced & motivated workforce. This equates to an economical and time saving solution delivered to the customer's door. This is a commitment to this key market and our desire to remain the major force in this sector for years to come.

Scaffold safety is uppermost priority in our guidelines and procedures. We operate the SafeDuard system that is audited internally and externally for the compliance to safety standards.



# STAIRCASE TOWERS

Mobile Towers | Staircase Tower | Safety Notes



# INDUSTRIAL & CIVIL PROJECTS



# CERTIFICATIONS

VISION رؤية  
2030  
المملكة العربية السعودية  
SAUDI ARABIA

وزارة التجارة  
Ministry of Commerce

مؤسسة المنصة الحديثة للمقاولات



السجل التجاري: 4030529257

## رمزك التجاري QR Code

من خلاله يمكنك التحقق المباشر من المعلومات:

- السجل التجاري
- شهادة السعودة
- شهادة الزكاة
- رخصة البلدية
- برنامج نطاقات
- الغرفة التجارية

MCgovSA  
www.mc.gov.sa



# CERTIFICATIONS

الرقم الموحد : ٧٠٣٧٠٦٢٢٩١  
رقم المنشأة : ٤٠٣٠٥٢٩٢٥٧  
التاريخ : ١٤٤٥/٠٤/٠٧ هـ

## شهادة تسجيل مؤسسة فردية Individual Establishment Registration Certificate



الاسم التجاري للمؤسسة : مؤسسة المنصة الحديثة للمقاولات  
مركزها الرئيسي : ٣٨٠٦، عمرو الكعبي، حي الرويس، ٧٦٠٧  
هاتف : ٠١٢٣٦٥٤٧٩٩ الرمز البريدي : ٢٣٢١٥ ص. ب :  
إسم التاجر : مراد انور عياد الجدعاني الجنسية : سعودي تاريخ الميلاد : ١٤٢٢ هـ  
رقم السجل المدني - الإقامة : ١١١٦٩٠٠٤٩٧ تاريخه : مصدرة :  
رقم الحقيبة - الجواز : تاريخه : مصدرة :  
النشاط : للاطلاع على بيانات الأنشطة الرجاء مسح الرمز التجاري  
رأس المال : ١٠,٠٠٠ عشرة آلاف ريال فقط لا غير  
إسم المدير أو الوكيل المفوض : مراد انور عياد الجدعاني  
الجنسية : سعودي تاريخ الميلاد : ١٤٢٢ هـ  
رقم السجل المدني - الإقامة : ١١١٦٩٠٠٤٩٧ تاريخه : مصدرة :  
سلطات المدير :  
يشهد مكتب السجل التجاري بمدينة جدة بأنه تم تسجيل المؤسسة المذكورة أعلاه بمدينة جدة  
وتنتهي صلاحية الشهادات في : ١٤٤٦/٠٤/١٩ بموجب الإيصال رقم : ٢٣١١٣١١٥٩٠٥٦ وتاريخ : ١٤٤٥/٠٤/١٧ هـ



To Verify The Information Of This Certificate Visit : <http://mc.gov.sa>  
يمكنكم التحقق من صحة هذه الشهادة بالدخول على : [www.mc.gov.sa](http://mc.gov.sa) MCgovSA @ f t y  
الرياض 11162 | Kingdom of Saudi Arabia | المملكة العربية السعودية | 966 11 294 4444

# CERTIFICATIONS

رؤية  
2030  
المنطقة العربية السعودية  
KINGDOM OF SAUDI ARABIA

المركز السعودي للأعمال  
Saudi Business Center

وزارة التجارة  
Ministry of Commerce



السادة / مؤسسة المنصة الحديثة للمقاولات

نسأل الله أن يكتب لكم التوفيق والنجاح في عملكم التجاري وأن تكونوا شريكاً في تعزيز اقتصاد المملكة العربية السعودية.

يسرنا إبلاغكم بأن رقم منشأتكم الموحد هو

٧٠٣٧٠٦٣٣٩١

وقد تم ربطه بالخدمات الحكومية التالية..

٦٤٤٤٨٤٩٦٣

رقم منشأتكم



٤٠٣٠٥٢٩٣٥٧

رقم منشأتكم



٥١٣١١٦

رقم منشأتكم



٣١٧٨٠٣٣

رقم منشأتكم



لا يوجد

رقم منشأتكم



٣١٠٣٥٩٥٠٢٠٧

رقم منشأتكم



٣١٠٣٧٥٧٣٩٩

رقم منشأتكم



للاستفادة من الخدمات المقدمة  
من الجهات الحكومية



دليل التاجر



# CERTIFICATIONS

Proof Number 1041834504 رقم الإثبات  
Original Date 9/11/2023 تاريخ الإصدار  
Expiration Date 7/5/2024 تاريخ الانتهاء



## إثبات عنوان Address Proof

### Address Holder Details

### بيانات صاحب العنوان

Name  مؤسسة المنصة الحديثة الاسم  
Customer Acc. 3 1 3 2 7 9 2 0 6 4 1 رقم الحساب  
Reg. Date 22/10/2023 تاريخ التسجيل

### Address Details

### تفاصيل العنوان

Short Address J B R A 3 8 0 6 العنوان المختصر  
Building No. Street رقم المبنى الشارع  
3 8 0 6 Amrou Al Kaabi عمرو الخعبي  
Secondary No. District الرقم الفرعي الحي  
7 6 0 7 Ar Ruwais Dist. حي الرويس  
Postal Code الرمز البريدي  
2 3 2 1 5  
City المدينة  
JEDDAH جدة  
Kingdom of Saudi Arabia المملكة العربية السعودية



للتحقق To Verify

<https://proof.address.gov.sa/VerifyProofNA.aspx>

تم إصدار هذا الإثبات إلكترونياً ولا يتطلب التوقيع عليه

تم إصدار هذا الإثبات بناءً على طلب الموضح أعلاه، ويحظر قطعياً تقليده أو إدخال أي تعديلات عليه سواء بالإضافة أو الحذف، وبعد الإثبات لانغيا إذا شابه شيء من ذلك، كما يعرض صاحبه للمساءلة القانونية.

This proof has been issued electronically and does not require a signature

This proof has been issued upon the request of the above-named, and it is absolutely prohibited to imitate it or make any modifications to it, whether by addition or deletion, and the proof is considered void if it is marred by something, and its owner is subject to legal accountability.



# CERTIFICATIONS



## شهادة اشتراك

### Membership

نشهد بأن This is to certify that

## مؤسسة المنصة الحديثة للمقاولات

### Not Available

عضو في الغرفة التجارية Is a member in the chamber

Certificate Date	14/01/2024 - 02/07/1445	تاريخ طباعة الشهادة
Date of Membership	-	تاريخ الاشتراك
Date of Expiry	22/10/2024 - 19/04/1446	تاريخ الانتهاء
Subscription Status	فعال	حالة الاشتراك
NUN	7037062291	رقم المنشأة الموحد
Membership No	513116	رقم الاشتراك
Membership Degree	الخامسة	درجة الاشتراك
Commercial Record/ License	4030529257	الرخصة / السجل التجاري
P. O. Box	0	صندوق البريد

التوقيع  
محمد أحمد العباس  
مدير إدارة شؤون خدمات العملاء



البوابة الموحدة  
للغرف السعودية





Your satisfaction  
**is our goal,**  
Your vision  
**is our business**

مؤسسة منصات الحديثة للمقاولات

**MODERN  
PLATFORM  
CONTRACTING**  
COMMITTED TO EXCELLENCE



٧-الكعبي حي الرئيس، صندوق البريد ٣٧٠٦، ٢٣٢١٥ جده  
المملكة العربية السعودية | [www.mpc-solution.com](http://www.mpc-solution.com)